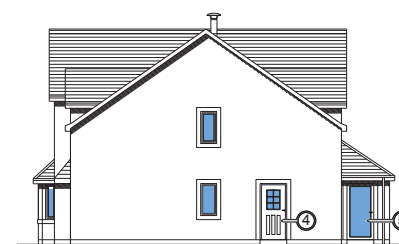
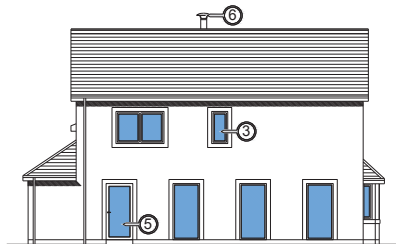
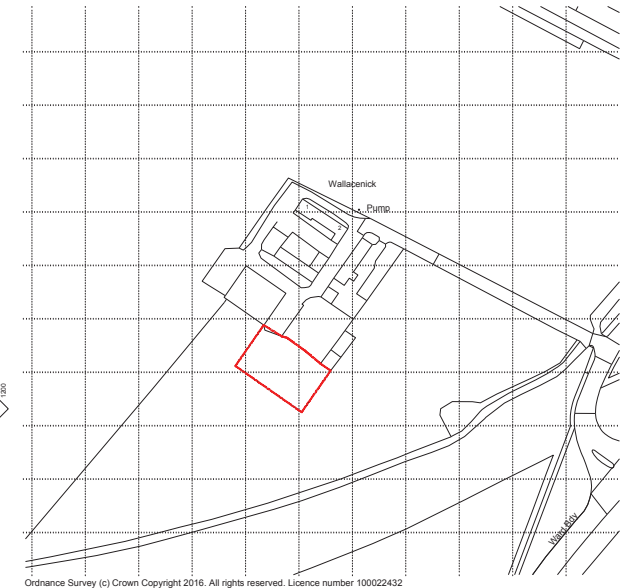


External Finishes	
1	Natural slate roof
2	Blockwork with White K-rend roughcast
3	Timber redwood System 2000 windows finished in Grey/Blue R5008
4	Timber External Door Set, Colour Grey/Blue R5008
5	Timber Full Glazed Door, Colour Grey/Blue R5008
6	Stainless steel Twin walled flue from stove
7	Velux Rooflight GGL MK04 780mm wide x 980mm high



© Crown copyright. All rights reserved. Licence Number 8004738

PLANNING ISSUE

PROJECT
 FOR SAMPLE DRAWING
 SITE

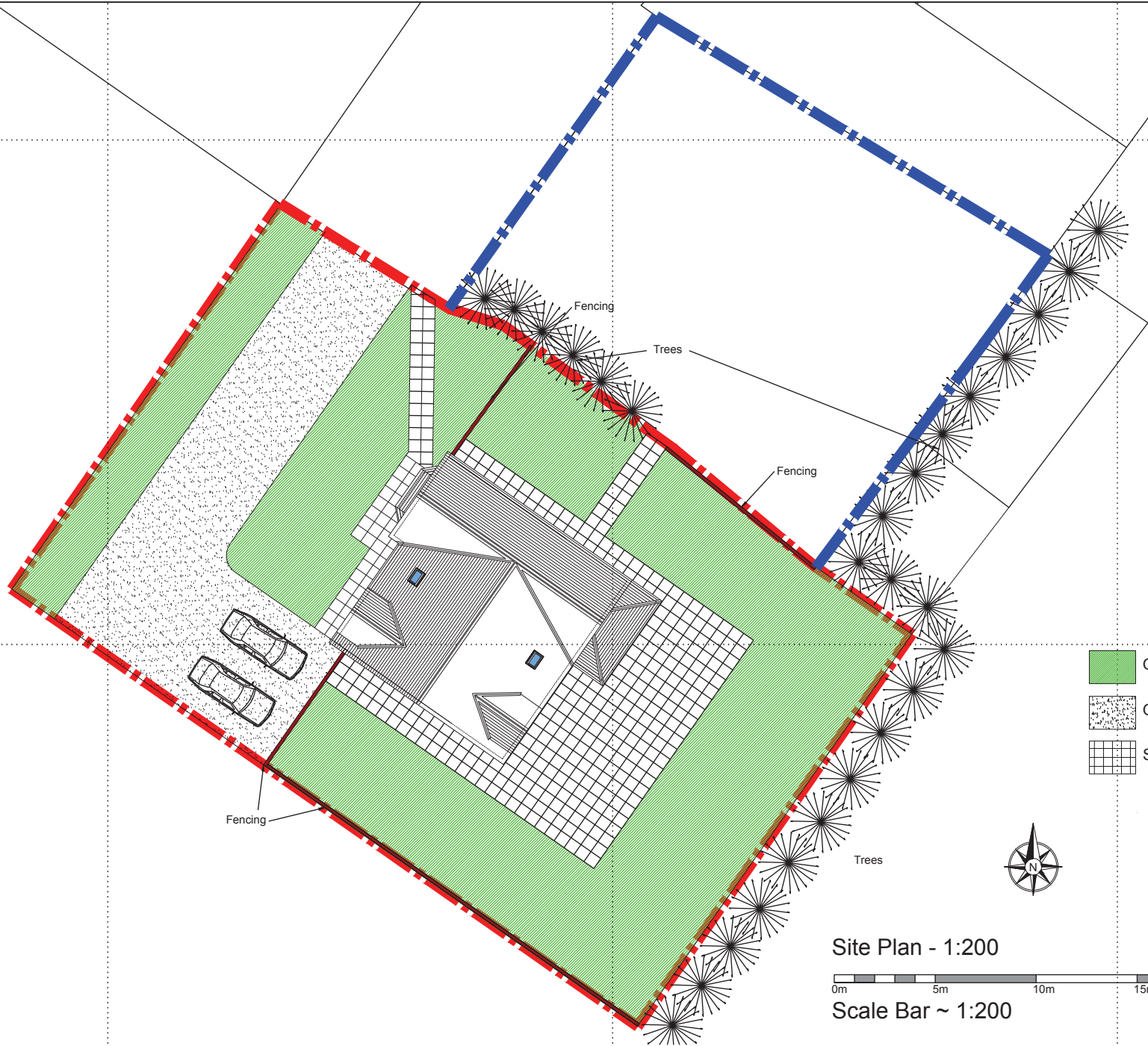
POSTCODE


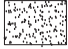
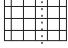
FLEMINGHOMES
 Station Road, Duns, Berwickshire, UK, TD11 3HS
 Telephone (01361) 883 785
 Fax (01361) 883 698
 Email: enquiries@fleminghomes.co.uk
 www.fleminghomes.co.uk

THIS DRAWING IS COPYRIGHT
 It is the responsibility of the customer and contractor appointed for the final design of electrical, bathroom, kitchen and utility fittings. Those indicated by Fleming Homes LTD are demonstrative for building control purposes only.
 Do not scale drawing
 Dimensioned wallplate layout plan will be provided
 Dimensions given are structural unless otherwise stated
 It is the entire responsibility of the customer to have ground conditions checked prior to start of work and have foundations designed accordingly.

SCALE	DRAWN	CHECKED	PAPER/DATE
1:50	FH	FH	A1 2017
1:100			
DATE	REVISIONS		
A			
B			
C			
D			
E			

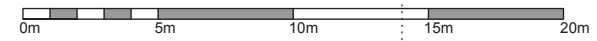
DRAWING Ref. PL1 **CONTRACT No.** 2017



-  Grassed areas
-  Gravel entrance/parking
-  Slab paving



Site Plan - 1:200



Scale Bar ~ 1:200